

www.indiratrade.com



MONDAY

CURRENCY COMMODITIES

WEEKLY REPORT

19 AUG 2019 TO 23 AUG 2019

EDGE



INDIRA SECURITIES PVT. LTD.



WEEKLY INDICES CHANGES

INDEX	CLOSE	PREV. CLOSE	Change (%)
SENSEX	37350	37581.91	-0.62%
NIFTY	11,047.00	11,109.70	-0.56%
DOW	25886	25897.7	-0.05%
NASDAQ	7895.99	7863.41	0.41%
FTSE	7117.15	7226.72	-1.52%
NIKKEI	20529.5	20436.5	0.46%
DAX	11,562.70	11,679.70	-1.00%
CAC	5,300.79	5,310.31	-0.18%

SS

Market Round Up:

- Dollar holds onto gains, but sentiment remains fragile: -The dollar held onto gains on Friday after a surge in U.S. retail sales eased concerns about the world's top economy, but traders cautioned against reading too much into one piece of data given the growing risks to the outlook.
- The greenback was on course for a weekly gain against safe-haven currencies such as the Japanese yen and the Swiss franc, pointing to some respite for frayed nerves after fears of recession and protests in Hong Kong rattled financial markets.
- Data showing American consumers continued to splurge in July came as a relief to investors after the U.S. bond market sounded alarms of a recession.
- This week's inversion in the U.S. Treasury yield curve, which has historically preceded several past U.S. recessions, has stoked fresh worries about the economic impact of the Sino-U.S. trade war.
- China on Thursday vowed to counter the latest U.S. tariffs on \$300 billion of Chinese goods, but U.S. President Donald Trump said any pact would have to be on America's terms, suggesting a resolution to the trade war remains elusive.

RBI REFERENCE RATE

INDEX	CLOSE	PREV. CLOSE
USDINR	71.2872	70.5185
EURINR	79.1468	78.9069
JPYINR	67.1700	66.5800
GBPINR	86.3269	85.6085

FII FIGURES

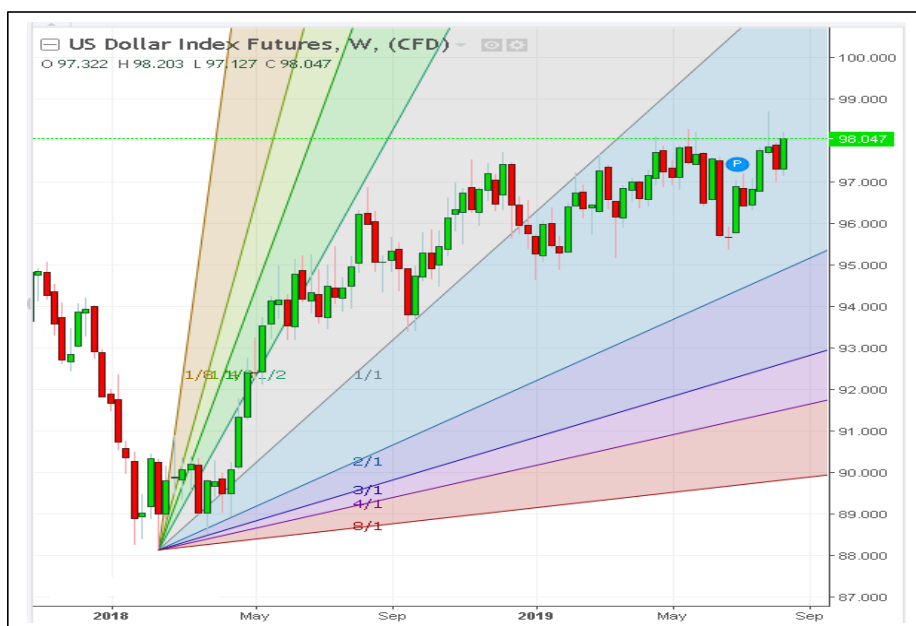
DATE	FII FIGURES IN CRORE
12/07	0.00
13/07	-638.28
14/07	1,614.63
15/08	0
16/08	-1,339.27
NET	-363

DII FIGURES

DATE	DII FIGURES IN CRORE
12/07	0
13/07	201.53
14/07	1619.82
15/08	0
16/08	1,058.28
NET	2880



DOLLAR INDEX CHART



US Dollar Index	
RSI(14)	BUY
STOCH(9,6)	SELL
STOCHRSI(14)	SELL
MACD(12,26)	BUY
ADX(14)	SELL
Williams %R	NETURAL
CCI(14)	BUY
Highs/Lows(14)	BUY
Ultimate Oscillator	SELL
ROC	BUY
BUY	4
SELL	4
NEUTRAL	1
SUMMARY	NETURAL

USDINR TECHNICAL CHART (INDIAN RUPEE)



USDINR.Rolling	
RSI(14)	BUY
STOCH(9,6)	BUY
STOCHRSI(14)	BUY
MACD(12,26)	BUY
ADX(14)	SELL
Williams %R	BUY
CCI(14)	BUY
Highs/Lows(14)	0
Ultimate Oscillator	BUY
ROC	BUY
BUY	8
SELL	1
NEUTRAL	0
SUMMARY	STRONG BULLISH



DOMESTIC CURRENCY

Domestic	S2	S1	PIVOT	R1	R2
USDINR	69.65	70.27	70.78	71.41	71.92
EURINR	77.37	78.44	79.28	80.35	81.2
GBPINR	84.05	84.85	85.8	86.61	87.56
JPYINR	65.61	66.34	66.77	67.49	67.92

GLOBAL CURRENCY

Global	S2	S1	PIVOT	R1	R2
DOLLAR INDEX	96.3	96.66	97.4	97.76	98.5
EURUSD	1.11	1.11	1.12	1.13	1.13
GBPUSD	1.2	1.2	1.21	1.22	1.23
USDJPY	104.69	105.21	106.08	106.6	107.47

CURRENCY PERFORMANCE

CURRENCY	CLOSE PRICE	DAY	WEEK	MONTHLY	YEARLY
EURO	1.10917	0.02%	-1.06%	-1.12%	-3.36%
POUND	1.2151	0.02%	0.65%	-2.88%	-5.04%
AUSTRALIAN DOLLAR	0.67762	-0.06%	0.37%	-3.79%	-7.66%
NEWZEALAND DOLLAR	0.64162	-0.17%	-0.46%	-5.05%	-3.34%
YEN	106.34	-0.01%	1.01%	-1.33%	-3.37%
YUAN	7.0531	0.16%	-0.69%	2.46%	3.20%
SWISS FRANC	0.97953	0.14%	1.06%	-0.26%	-1.20%
CANADIAN DOLLAR	1.32744	0.03%	0.27%	1.19%	1.75%
MEXICAN PESO	19.6407	-0.05%	0.18%	3.09%	3.37%
INDIAN RUPEE	71.15	-0.90%	0.34%	3.37%	1.92%
BRAZILIAN REAL	4.0054	0.37%	1.64%	6.44%	0.91%
RUSSIAN RUBBLE	66.3738	-0.14%	1.72%	5.62%	-0.88%
DOLLAR INDEX	98.2	0.06%	0.84%	1.09%	2.39%
KORREAN WON	1212.08	0.38%	-0.50%	3.08%	8.50%
SOUTH AFRICAN RAND	15.2804	-0.09%	0.00%	10.30%	5.24%
SINGAPORE DOLLAR	1.3854	0.09%	-0.09%	1.82%	1.22%
HONGKONG DOLLAR	7.8437	-0.01%	-0.04%	0.43%	-0.07%

COMMODITIES

FUNDAMENTAL OF COMMODITIES

MAJOR COMMODITIES

MCX ENERGY WEEKLY

Commodity	S2	S1	Pivot	R1	R2
Crude oil	3598.3	3744.7	3898.3	4044.7	4198.3
Natural Gas	135.8	142.1	151.8	158.1	167.8

MCX BASE METAL WEEKLY

Commodity	S2	S1	Pivot	R1	R2
Copper	417.2	425.2	440.6	448.7	464.1
Zinc	184.8	186.6	189.5	191.3	194.2
Lead	141.9	146.7	152.8	157.6	163.7
Nickel	958.9	990.7	1011.1	1042.9	1063.3

PRECIOUS METAL WEEKLY

Commodity	S2	S1	Pivot	R1	R2
Gold	33783.0	34680.0	35162.0	36059.0	36541.0
Silver	39758.7	40561.3	41087.7	41890.3	42416.7

Updates:

- Gold Prices Dip After Solid Rally as Risk Sentiment Returns: - Gold prices dropped on Friday, giving back a small portion of August's gains, as sovereign debt yields pulled away from historic lows and signs of economic stimulus boosted risk sentiment.
- The moves by policymakers helped calm nerves over the economic outlook that had boosted demand for safe-haven gold. The yield on the 10-year U.S. Treasury also moved back above that of the 2-year note, reversing the inversion that some economists say flags a pending recession.
- OPEC sees bearish oil outlook for rest of 2019, points to 2020 surplus: - OPEC delivered a downbeat oil market outlook for the rest of 2019 on Friday as economic growth slows

International Commodity	S2	S1	Pivot	R1	R2	CMP	PREV CLOSE
Gold COMEX	\$1,394.00	\$1,426.00	\$1,444.00	\$1,476.00	\$1,494.00	\$1,510.00	\$1,458.00
SILVER COMEX	15.58	15.93	16.28	16.63	16.98	16.94	16.27
NYMEX CRUDE	50.79	53.23	56.02	58.46	61.25	52.54	55.66
BRENT CRUDE	56.85	59.06	62.24	64.45	67.63	57.77	61.27



COMMODITIES

MAJOR COMMODITIES

Commodity Major	Price	Day	Weekly	Monthly	Yearly
Crude Oil	55.4727	0.93%	0.99%	-1.31%	-16.49%
Brent	59.1639	1.06%	1.03%	-6.60%	-18.05%
Natural gas	2.1794	-1.09%	3.53%	-5.74%	-25.90%
Gold	1508.88	-0.31%	-0.15%	5.91%	26.78%
Silver	17.0071	-0.23%	-0.28%	4.08%	15.60%
Platinum	848.1	0.43%	-0.52%	0.49%	6.88%
Palladium	1452.31	0.30%	1.74%	-4.98%	59.51%
Copper	2.5943	-0.02%	0.55%	-4.43%	-2.60%
Lead	2038.5	-1.45%	-2.03%	1.95%	4.65%
Aluminum	1792	0.56%	1.19%	-2.98%	-12.80%
Tin	16575	-3.32%	-1.92%	-7.53%	-11.84%
Zinc	2261	-0.13%	1.21%	-8.63%	-4.90%



MCX GOLD CHART



Commodity	S2	S1	Pivot	R1	R2
Gold	33783.0	34680.0	35162.0	36059.0	36541.0

GOLD TECHNICAL INDICATOR	
RSI(14)	BUY
STOCH(9,6)	BUY
STOCHRSI(14)	BUY
MACD(12,26)	BUY
ADX(14)	SELL
Williams %R	BUY
CCI(14)	BUY
Highs/Lows(14)	BUY
Ultimate Oscillator	BUY
ROC	BUY
BUY	8
SELL	1
NEUTRAL	0
SUMMARY	STRONG BULLISH

GOLD INTERNATIONAL CHART



Commodity	S2	S1	Pivot	R1	R2
Gold	\$1,394.0	\$1,426.0	\$1,444.0	\$1,476.0	\$1,494.0

GOLD INTERNATIONAL TECHNICAL INDICATOR	
RSI(14)	BUY
STOCH(9,6)	BUY
STOCHRSI(14)	BUY
MACD(12,26)	BUY
ADX(14)	BUY
Williams %R	BUY
CCI(14)	BUY
Highs/Lows(14)	BUY
Ultimate Oscillator	BUY
ROC	BUY
BUY	9
SELL	0
NEUTRAL	0
SUMMARY	STRONG BULLISH



MCX SILVER CHART



Commodity	S2	S1	Pivot	R1	R2
Silver	39758.7	40561.3	41087.7	41890.3	42416.7

SILVER TECHNICAL INDICATOR

RSI(14)	SELL
STOCH(9,6)	SELL
STOCHRSI(14)	SELL
MACD(12,26)	SELL
ADX(14)	SELL
Williams %R	SELL
CCI(14)	SELL
Highs/Lows(14)	BUY
Ultimate Oscillator	SELL
ROC	SELL
BUY	7
SELL	2
NEUTRAL	0
SUMMARY	STRONG BULLISH

SILVER INTERNATIONAL CHART



Commodity	S2	S1	Pivot	R1	R2
Silver	\$15.6	\$15.9	\$16.3	\$16.6	\$17.0

SILVER INTERNATIONAL TECHNICAL INDICATOR

RSI(14)	BUY
STOCH(9,6)	BUY
STOCHRSI(14)	SELL
MACD(12,26)	BUY
ADX(14)	SELL
Williams %R	BUY
CCI(14)	BUY
Highs/Lows(14)	BUY
Ultimate Oscillator	BUY
ROC	BUY
BUY	7
SELL	2
NEUTRAL	0
SUMMARY	STRONG BULLISH



MCX COPPER CHART

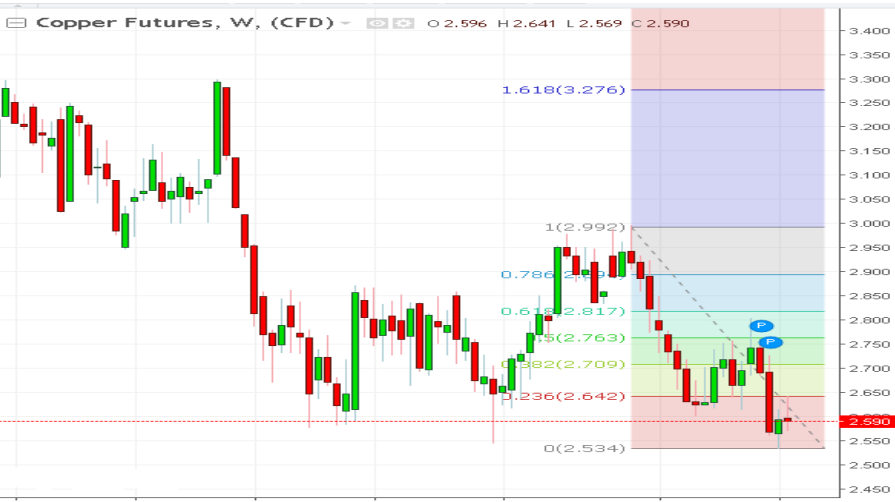


Commodity	S2	S1	Pivot	R1	R2
Copper	417.2	425.2	440.6	448.7	464.1

COPPER TECHNICAL INDICATOR

RSI(14)	BUY
STOCH(9,6)	SELL
STOCHRSI(14)	SELL
MACD(12,26)	BUY
ADX(14)	SELL
Williams %R	NETURAL
CCI(14)	BUY
Highs/Lows(14)	BUY
Ultimate Oscillator	SELL
ROC	BUY
BUY	4
SELL	4
NEUTRAL	1
SUMMARY	NETURAL

COPPER INTERNATIONAL CHART



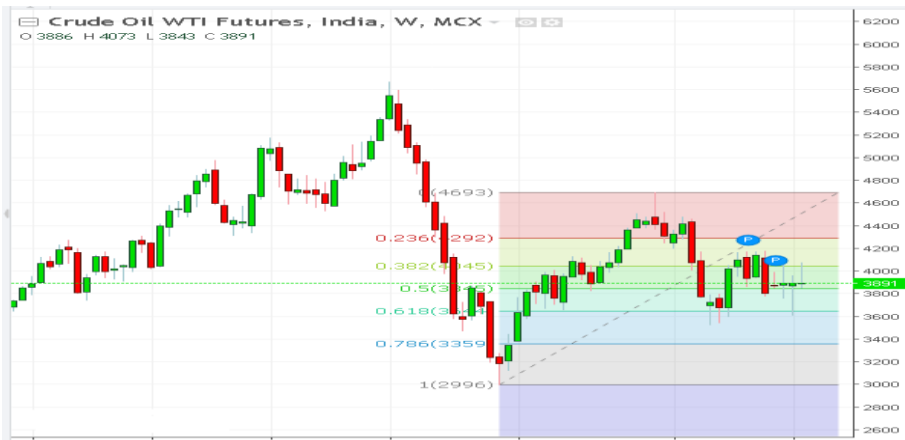
Commodity	S2	S1	Pivot	R1	R2
Copper	\$2.460	\$2.510	\$2.620	\$2.670	\$2.780

COPPER INTERNATIONAL TECHNICAL INDICATOR

RSI(14)	SELL
STOCH(9,6)	SELL
STOCHRSI(14)	SELL
MACD(12,26)	SELL
ADX(14)	SELL
Williams %R	NETURAL
CCI(14)	SELL
Highs/Lows(14)	BUY
Ultimate Oscillator	SELL
ROC	SELL
BUY	1
SELL	8
NEUTRAL	1
SUMMARY	STRONG BEARISH



MCX CRUDE CHART

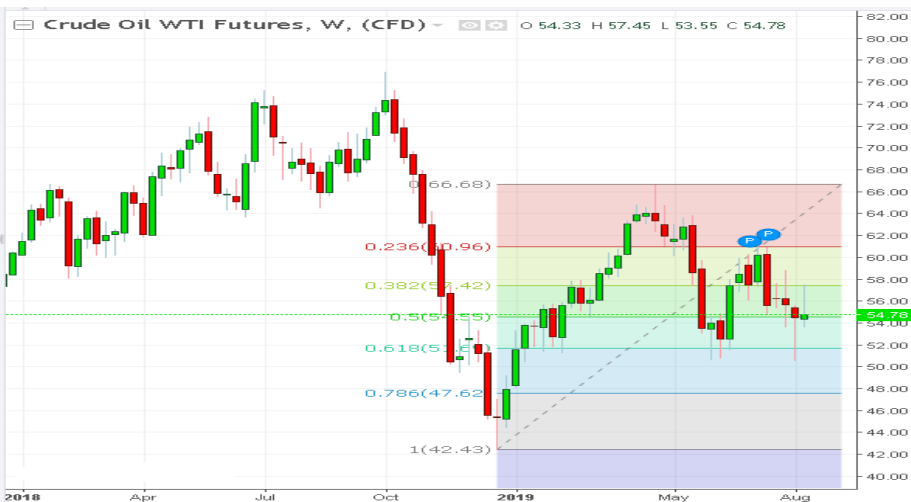


Commodity	S2	S1	Pivot	R1	R2
Crude oil	3598.3	3744.7	3898.3	4044.7	4198.3

CRUDEOIL TECHNICAL INDICATOR

RSI(14)	SELL
STOCH(9,6)	BUY
STOCHRSI(14)	BUY
MACD(12,26)	SELL
ADX(14)	SELL
Williams %R	NETURAL
CCI(14)	SELL
Highs/Lows(14)	BUY
Ultimate Oscillator	SELL
ROC	SELL
BUY	3
SELL	6
NEUTRAL	1
SUMMARY	MILD BEARISH

NYMEX CRUDE CHART



Commodity	S2	S1	Pivot	R1	R2
Crude oil	\$50.8	\$53.2	\$56.0	\$58.5	\$61.3

CRUDE.OILNYM TECHNICAL INDICATOR

RSI(14)	SELL
STOCH(9,6)	BUY
STOCHRSI(14)	SELL
MACD(12,26)	SELL
ADX(14)	SELL
Williams %R	NETURAL
CCI(14)	SELL
Highs/Lows(14)	BUY
Ultimate Oscillator	SELL
ROC	SELL
BUY	2
SELL	7
NEUTRAL	1
SUMMARY	STRONG BEARISH



MCX NATURAL GAS

Natural Gas Futures, India, W, MCX - [] []

O 151.40 H 158.70 L 149.40 C 155.30



Commodity	S2	S1	Pivot	R1	R2
Natural Gas	135.8	142.1	151.8	158.1	167.8

NATURAL GAS INTERNATIONAL

Natural Gas Futures, W, (CFD) - [] []

O 2.127 H 2.266 L 2.087 C 2.173



Commodity	S2	S1	Pivot	R1	R2
Natural Gas	\$1.920	\$2.020	\$2.180	\$2.280	\$2.430

NATURALGAS TECHNICAL INDICATOR

RSI(14)	SELL
STOCH(9,6)	BUY
STOCHRSI(14)	BUY
MACD(12,26)	BUY
ADX(14)	SELL
Williams %R	NETURAL
CCI(14)	SELL
Highs/Lows(14)	BUY
Ultimate Oscillator	SELL
ROC	SELL
BUY	4
SELL	5
NEUTRAL	1
SUMMARY	NETURAL

NATURAL GAS INTER. TECHNICAL INDICATOR

RSI(14)	SELL
STOCH(9,6)	BUY
STOCHRSI(14)	BUY
MACD(12,26)	BUY
ADX(14)	SELL
Williams %R	NETURAL
CCI(14)	SELL
Highs/Lows(14)	BUY
Ultimate Oscillator	SELL
ROC	SELL
BUY	4
SELL	5
NEUTRAL	1
SUMMARY	NETURAL

IMP ECONOMIC DATA TO WATCH FOR THE WEEK

[illegible]



204 Amardarshan Building 3rd floor Saket Nagar , Indore-452018

Call: 0731-4797170-171-172

To get regular updates please whatsapp us on Mob. +91 9300059777

DISCLAIMER

This report is for private circulation within the Indira Group. This report is strictly confidential and for information of the selected recipient only and may not be altered in any way, transmitted to, copied or distributed, in part or in whole, to any other person or to the media or reproduced in any form. This report should not be construed as an offer or solicitation to buy or sell any securities or any interest in securities. It does not constitute a personal recommendation or take into account the particular investment objectives, financial situations, or any such factor. The information, opinions estimates and forecasts contained here have been obtained from, or are based upon, sources we believe to be reliable, but no representation of warranty, express or implied, is made by us to their accuracy or completeness. Opinions expressed are our current opinions as of our current opinions as of the data appearing on this material only and are subject to change without notice.